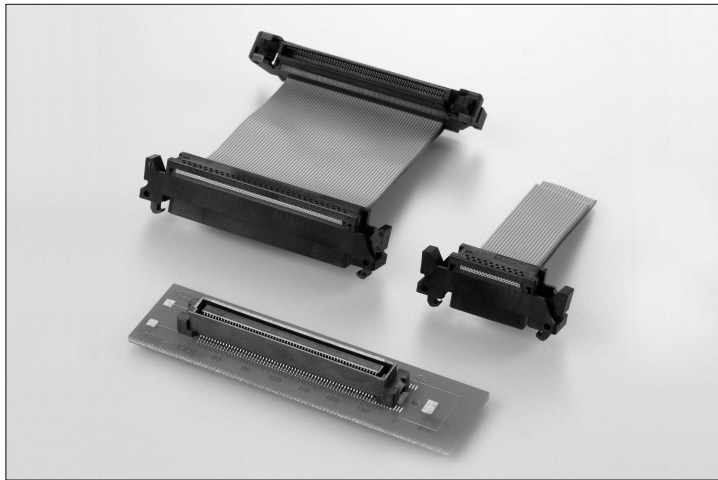


**0.635mm PITCH 2 PIECE CONNECTOR
IDC CONNECTOR FOR 0.635mm PITCH CABLE (#30 AWG)**

8622E_{SERIES}





FEATURES

- 0.635mm pitch Boated to Cable connector
- IDC connector for design with effective contact displacement of 1.4mm
- IDC for 0.635mm flat ribbon cable (#30 AWG)
- One-Touch locking ejector system
- PCB side connector (Plug, 8630E series) is able to mate with 8601 series
- Four sizes : 40, 80, 100 and 120 pins
- Coplanarity of 0.1mm (8630E)
- Variations of using different types of connectors are available, because two cables will be attaches to the connector (8622E) in layers. For example, it is possible to use 8622E series to one side of the cable and two of KEL 8925 or / and 8825E series to the another
- RoHS compliance

SPECIFICATIONS

- Insulator material : Glass-filled Nylon 66 (UL94V-0), 8622□(Cable side connector) Black
- Insulator material : Glass-filled LCP (UL94V-0), 8630E(PCB side connector) Black
- Contact material : Copper alloy
- Contact plating : Gold over Nickel
- Current rating : 0.5A per contact
- Contact resistance : 50mΩ max.
- Dielectric withstanding voltage : 200V AC for 1 minute
- Insulation resistance : 100MΩ min. at 250V DC
- Operating temperature : -40°C to +85°C

ORDER CODE

8622 - □□□□

- No. of contacts
 040 : 40 pin 100 : 100 pin
 080 : 80 pin 120 : 120 pin
- Series name
 8622E : Receptacle (Cable side connector)
 Ejector type, With strain relief
 8622R : Receptacle (Cable side connector)
 Ejector type, Without strain relief

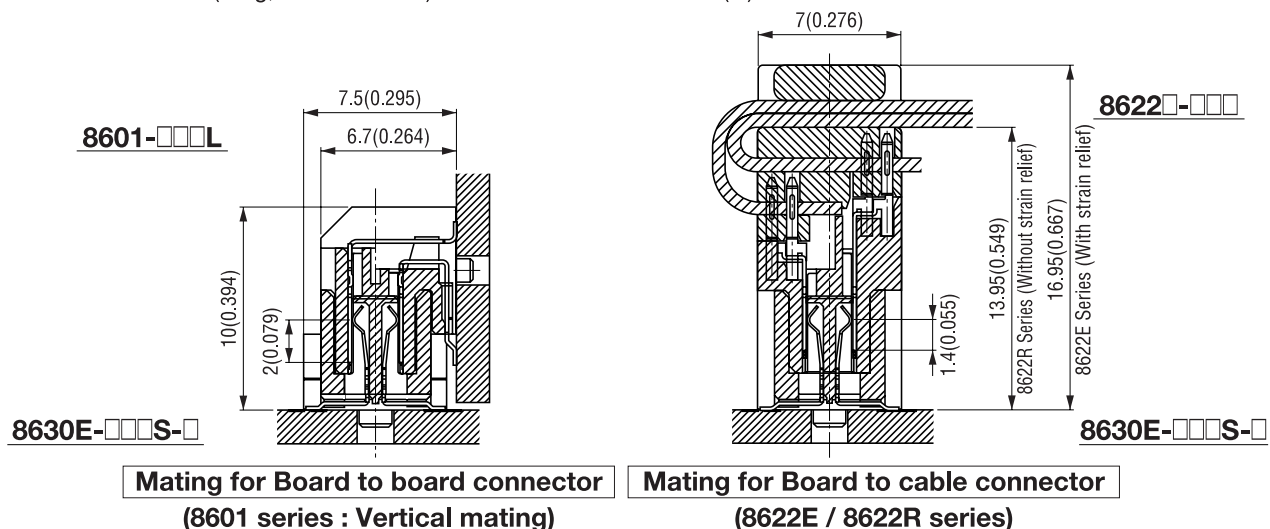
8630E - □□□□ **S** - □

- P : With Pick&Place cap
 Omit : Without Pick&Place cap
- Contact tail style
 S : Straight, SMT
- No. of contacts
 040 : 40 pin 100 : 100 pin
 080 : 80 pin 120 : 120 pin
- Series name
 8630E : Plug (PCB side connector)

8630E Series Mating Variation

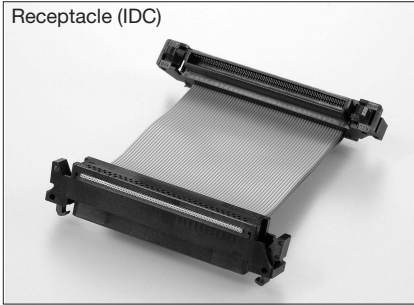
■ PCB side connector (Plug, 8630E Series) is able to mate with 8622E(R) Series and 8601 Series.

Unit:mm(inch)

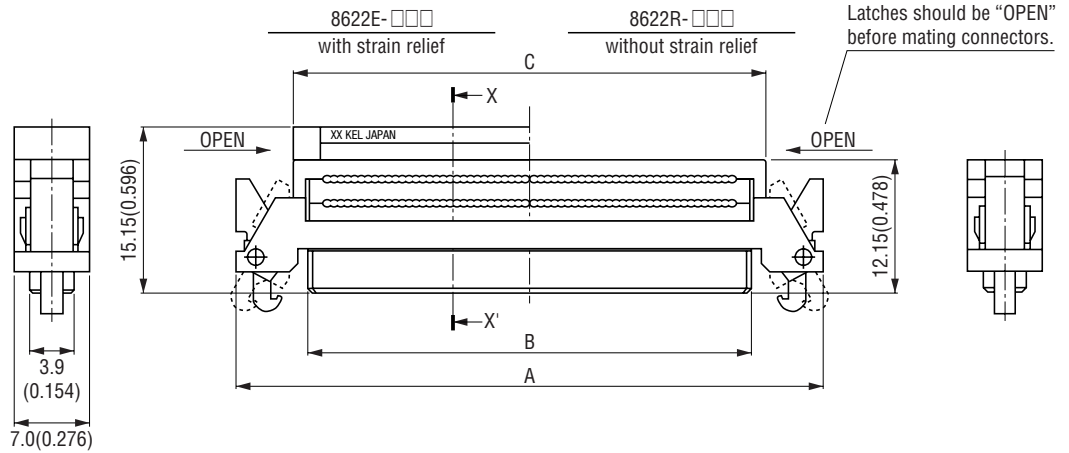
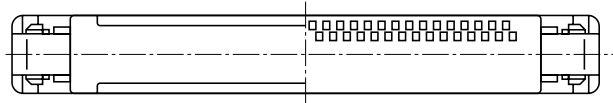


8622□-□□□(Receptacle)

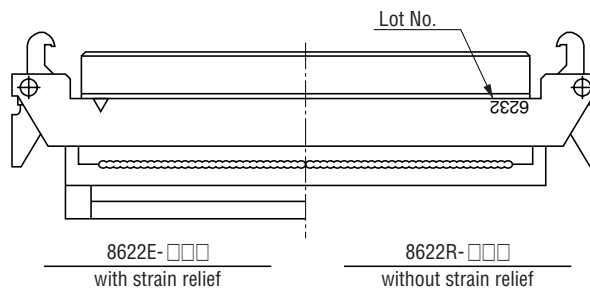
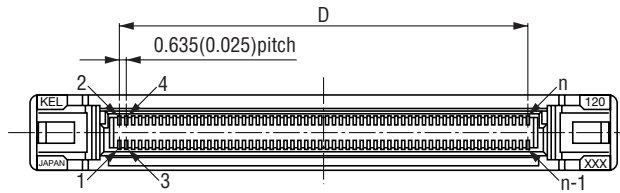
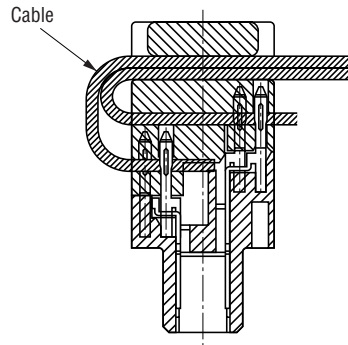
Receptacle (IDC)



Unit:mm(inch)



X-X' Cross Section



Packaging style
Pipe

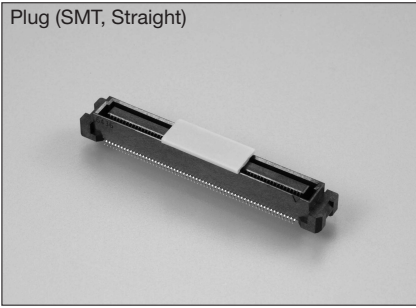
■ Product Table / Dimensions

No. of contacts	Part Number	A	B	C	D	Number of packaging
40	8622□-040	28.95 (1.140)	15.75 (0.620)	18.35 (0.722)	12.065 (0.475)	17
80	8622□-080	41.65 (1.640)	28.45 (1.120)	31.05 (1.222)	24.765 (0.975)	12
100	8622□-100	48.00 (1.890)	34.80 (1.370)	37.40 (1.472)	31.115 (1.225)	10
120	8622□-120	54.35 (2.140)	41.15 (1.620)	43.75 (1.722)	37.465 (1.475)	9

8630E-□□□S-□(Plug)

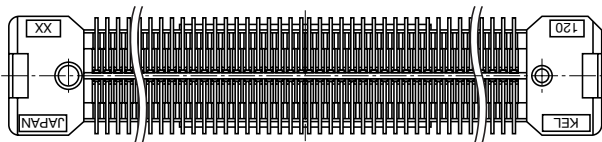
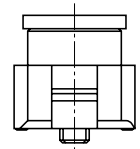
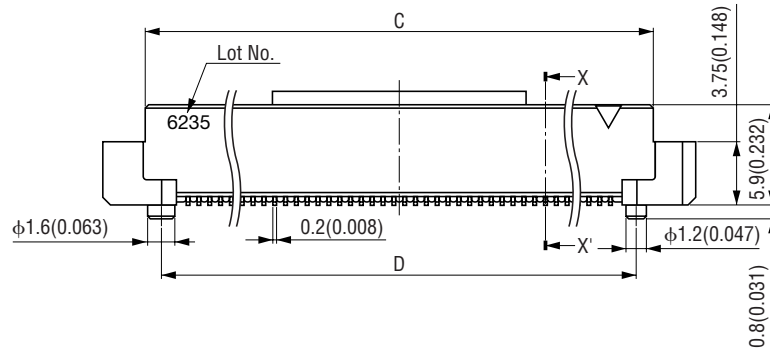
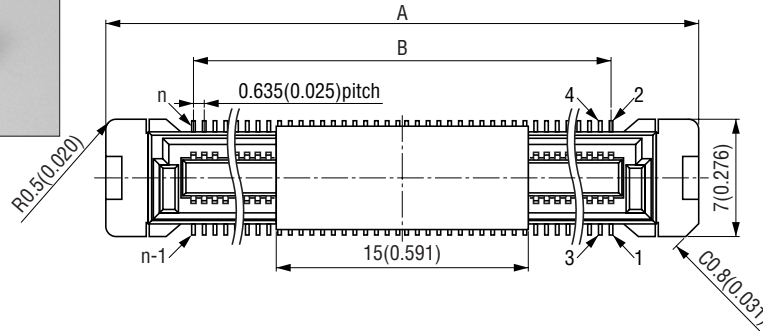
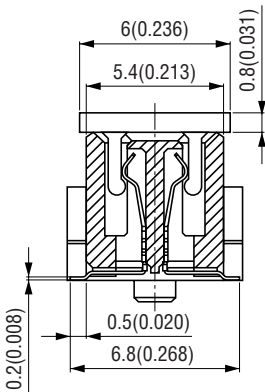
Unit:mm(inch)

Plug (SMT, Straight)

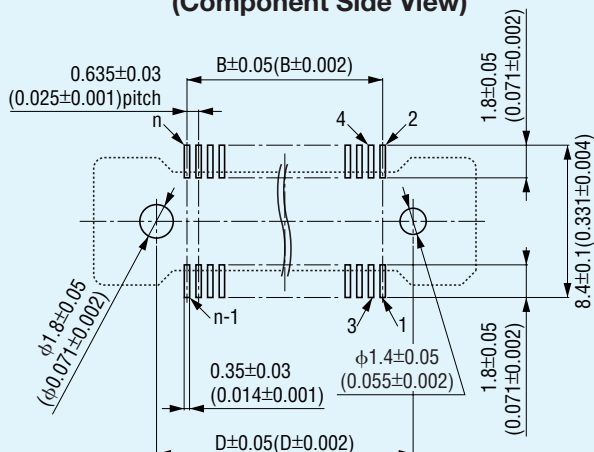


*Figure of with pick&place cap type is used.

X-X' Cross Section



**Printed Circuit Board Layout
(Component Side View)**



"n" is number of contacts.

Packaging style
Tray

Product Table / Dimensions

No. of contacts	Part Number	A	B	C	D	Number of packaging
40	8630E-040S-□	22.35 (0.880)	12.065 (0.475)	17.35 (0.683)	15.35 (0.604)	60
80	8630E-080S-□	35.05 (1.380)	24.765 (0.975)	30.05 (1.183)	28.05 (1.104)	40
100	8630E-100S-□	41.40 (1.630)	31.115 (1.225)	36.40 (1.433)	34.40 (1.354)	30
120	8630E-120S-□	47.75 (1.880)	37.465 (1.475)	42.75 (1.683)	40.75 (1.604)	30